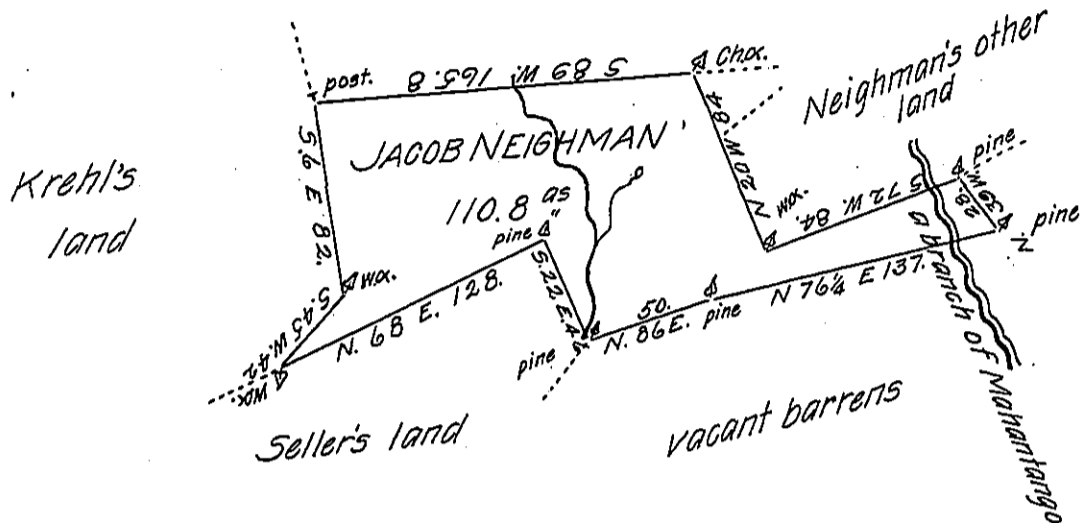


FORM NO. 1.

Courses & Distances

- N 39 W. 28
- S 72 W 90
- N 20 W 84
- S 89 W 165.8
- S 6 E. 82
- S 45 W. 42
- N. 68 E. 128.
- S 22 E. 46
- N 86 E. 50.
- N 76 1/4 E. 137



The Draught of a tract of land Situate in Penns township Northumberland County containing one hundred & ten acres & eight tenths & the usual allowance of Six per Cent for roads & c^o Surveyed for Jacob Neighman Oct^r the 12th 1786 in pursuance of a Warrant from the Honorable Vice President of the Supreme Executive Council Dated March the eighth 1786.

P^r Frd^k Evans D.S.

John Lukens Esq^r Surv^r Gen^l

16
8
128

110. 128
27. 15
137 143.

IN TESTIMONY that the above is a copy of the original remaining on file in the Department of Internal Affairs of Pennsylvania, made conformably to an Act of Assembly approved the 16th day of February, 1833, I have hereunto set my Hand and caused the Seal of said Department to be affixed at Harrisburg, this twenty eighth day of March 1906.

Luca N. Brown
Secretary of Internal Affairs.